

Exporting/Importing Composites



Step 1



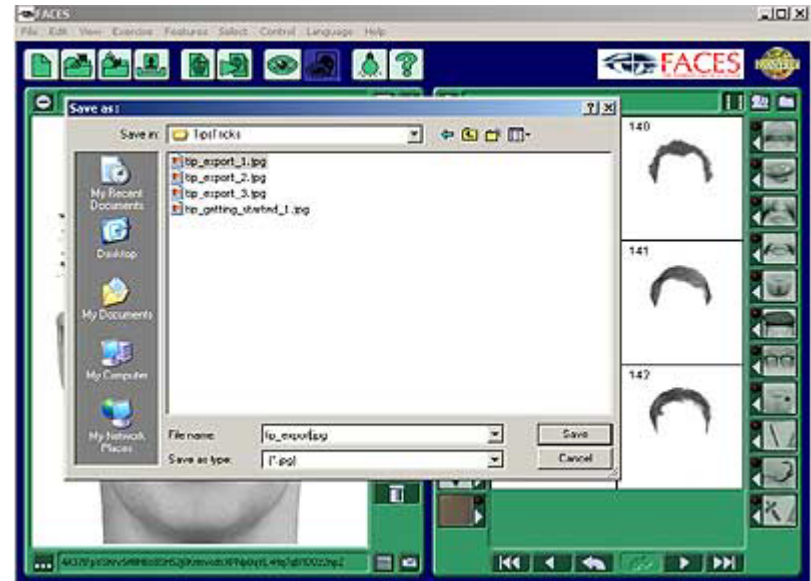
- FACES 4.0 can export composites to JPEG and PICT* formats. In this tutorial, I will show you how to export a composite to the standard JPEG.
 - * Only Macintosh users can export to PICT format.
1. The export feature is located under the "File->Export" menu bar.



Step 2



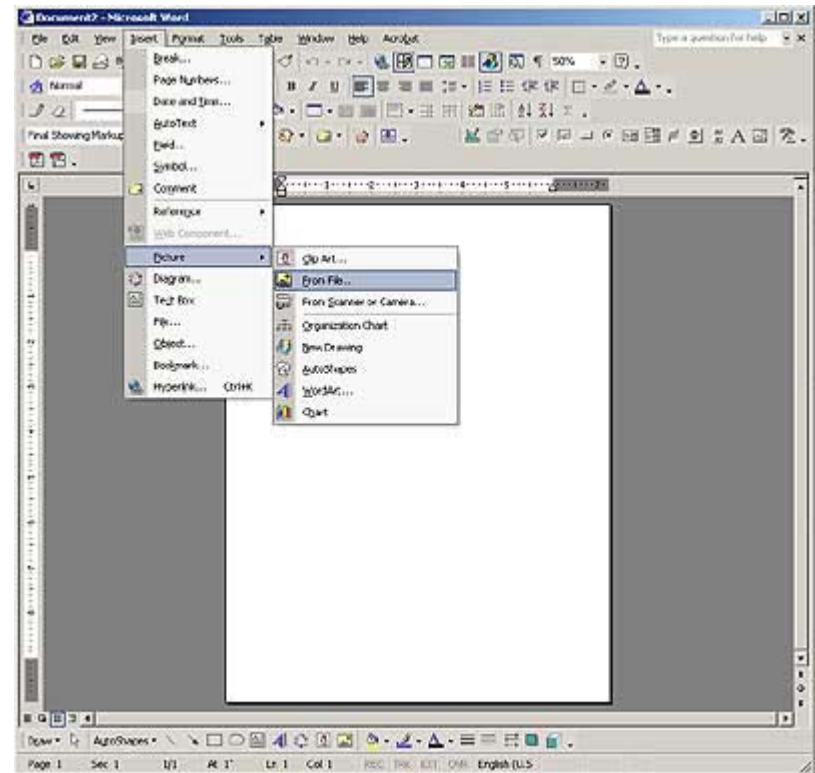
- Now that you found the export function, it's time to save your composite. A save screen will appear where you will select the folder that you wish to use to save the image. Name the image and click "Save".



Step 3



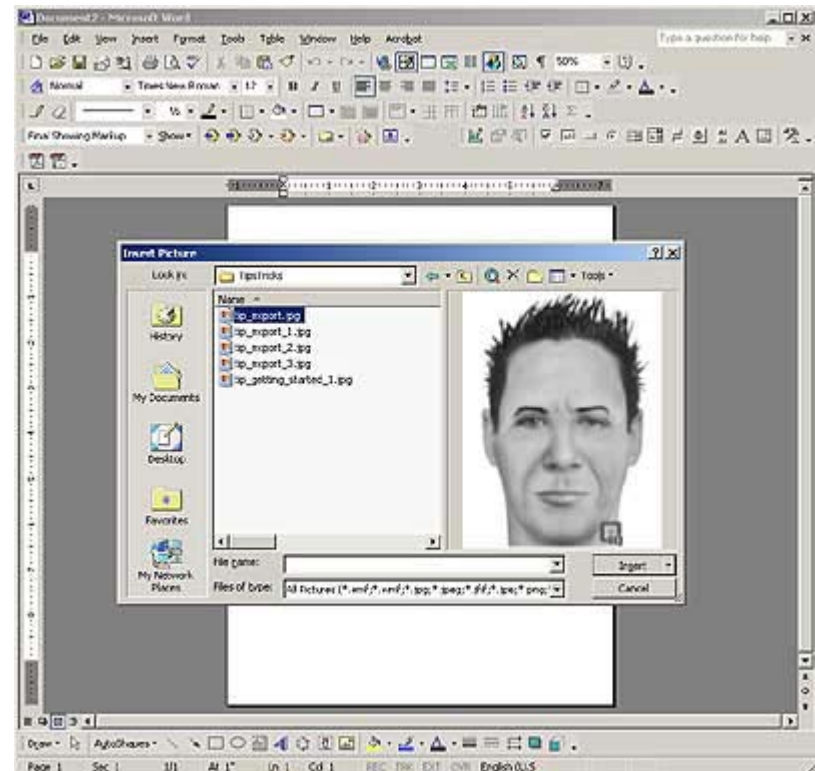
- Now, it's time to import your composite! Importing a composite into your favorite program is just as simple. First open your favorite editor (Microsoft Word, Adobe Photoshop, Paint, etc...). Below you will find a screen shot of Microsoft Word. To insert an image to go Insert > Picture > From File.



Step 4



- 2. Now, browse your files until you find the composite that you would like to import.



Step 5



- Once you find the composite that you wish to import, simply click on the "Insert" button. Also called "Okay" button. You will now be able to edit the composite.

