

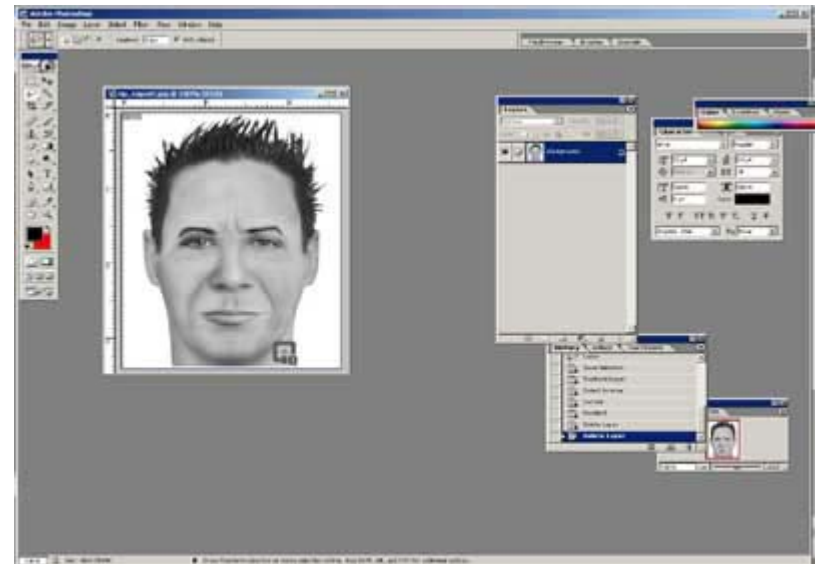
Skin Toning Composites



Step 1



■ There are several ways to darken/lighten your composite. Printing your composite in dark mode, photocopying it in dark mode, manipulating your composite using graphics software are common options. This tutorial will show you how to darken a composite using Adobe Photoshop 6.0 or greater. To start, open your composite using Adobe Photoshop.

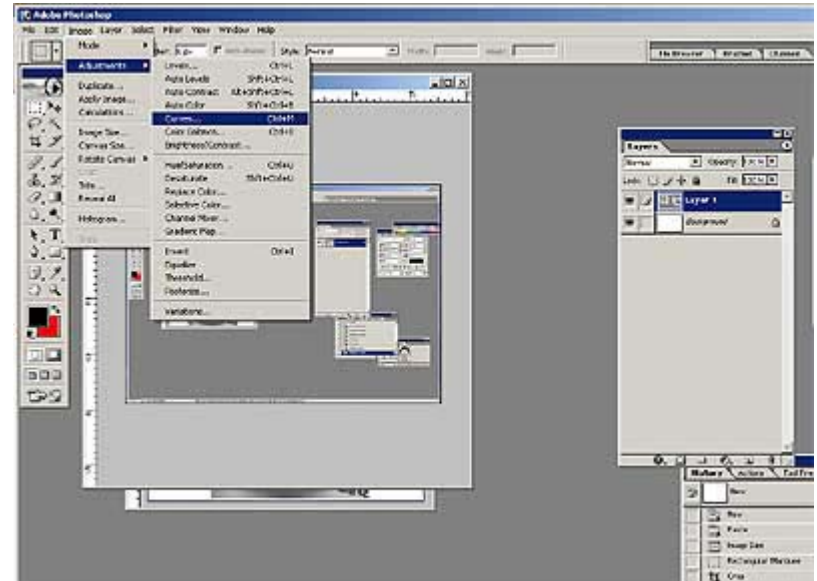


Screen shot of Adobe Photoshop 7.0.

Step 2



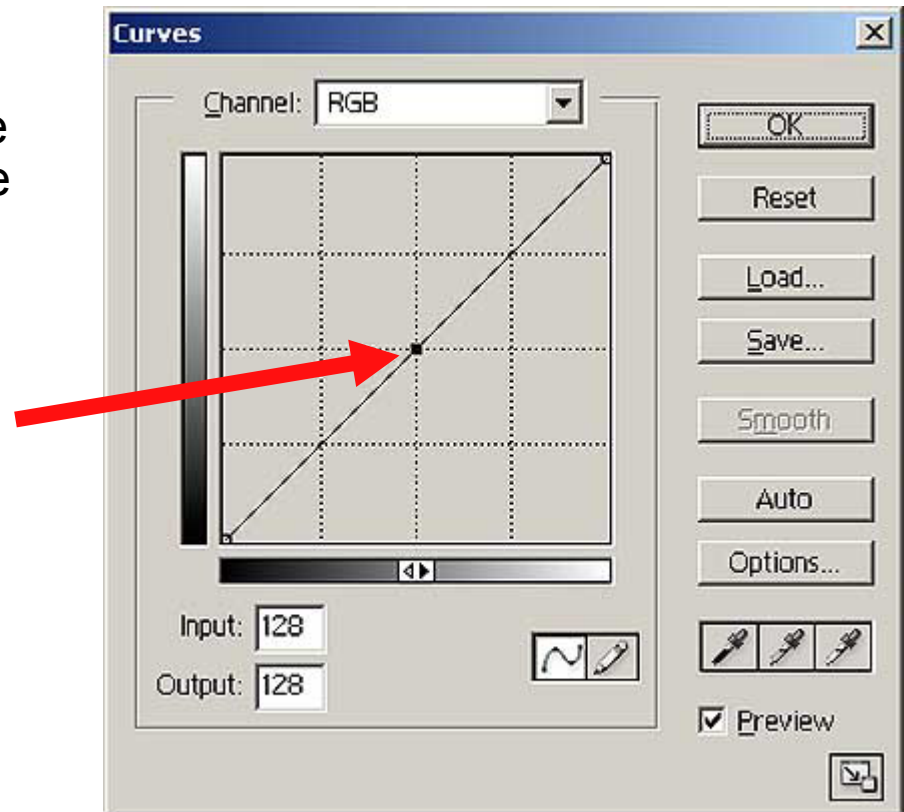
- Now find the Curves option located under the Image->Adjustments->Curves



Choosing the Image->Adjustments->Curves option.

Step 3

- The Curves option can be intimidating at first but all you need to know is how to click and drag the dot located right in the middle of the grid. Moving this bar down will darken the composite. Moving this bar up will lighten the composite. Try it!

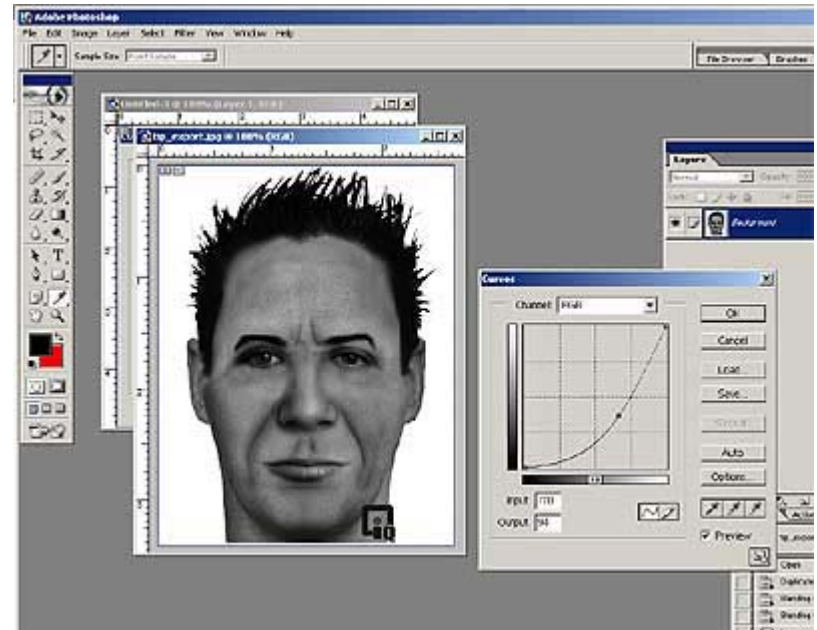


The Curves option

Step 4



- Notice that as you move the bar up and down, you will be able to preview the composite in real-time. Once you are satisfied with the tone of the composite, click okay to continue.

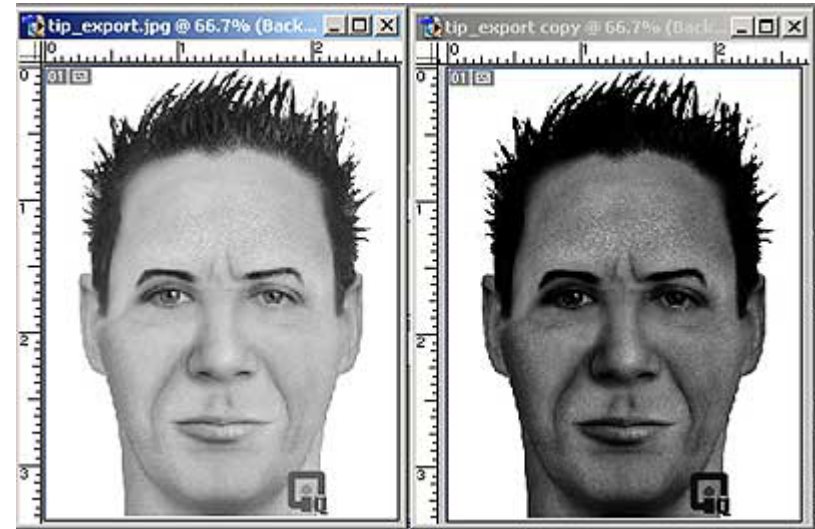


Darkening a composite using Curves.

Step 5



■ This is a very simple tutorial prepared for those who have little knowledge of graphic design programs. Professional designers can help you achieve much better results than what I have shown you today. See Below.



Before and after results.

